



JSW Neosteel EDS
Extra Ductile & Strong TMT Bars

Extra Ductile & Super Strong

For earthquake-resistant
construction





JSW GROUP

The US\$ 24 billion JSW Group is ranked among India's leading business houses. JSW's innovative and sustainable presence in various sectors including Steel, Energy, Infrastructure, Cement, Paints, Venture Capital and Sports is helping the Group play an important role in driving India's economic growth. The Group strives for excellence by leveraging its strengths & capabilities including a successful track-record of executing large capital-intensive & technically complex projects, differentiated product-mix, state-of-the-art manufacturing facilities and greater focus on pursuing sustainable growth.

With a culturally diverse workforce spread across India, USA, Europe and Africa, JSW Group directly employs nearly 40,000 people. It also has a strong social development focus aimed at empowering local communities residing around its Plant & Port locations. JSW Group is known to create value for all its stakeholders by combining its growth roadmap, superior execution capabilities and a relentless drive to be #BetterEveryday.







JSW STEEL LTD.

JSW Steel is the flagship business of the diversified US\$ 24 billion JSW Group. Over the last three decades, it has grown from a single manufacturing unit to become India's leading integrated steel company with capacity of 28 MTPA in India & USA (including capacities under joint control). Its roadmap for the next phase of growth includes a target of achieving 37.5 MTPA steel capacity by FY25. The Company's manufacturing unit in Vijayanagar, Karnataka is the largest single location steel-producing facility in India with a capacity of 12 MTPA.

JSW Steel has always been at the forefront of research and innovation offering high-value special steel products to its customers. These products are extensively used across industries and applications including construction, infrastructure, automobile, electrical applications, appliances, etc.

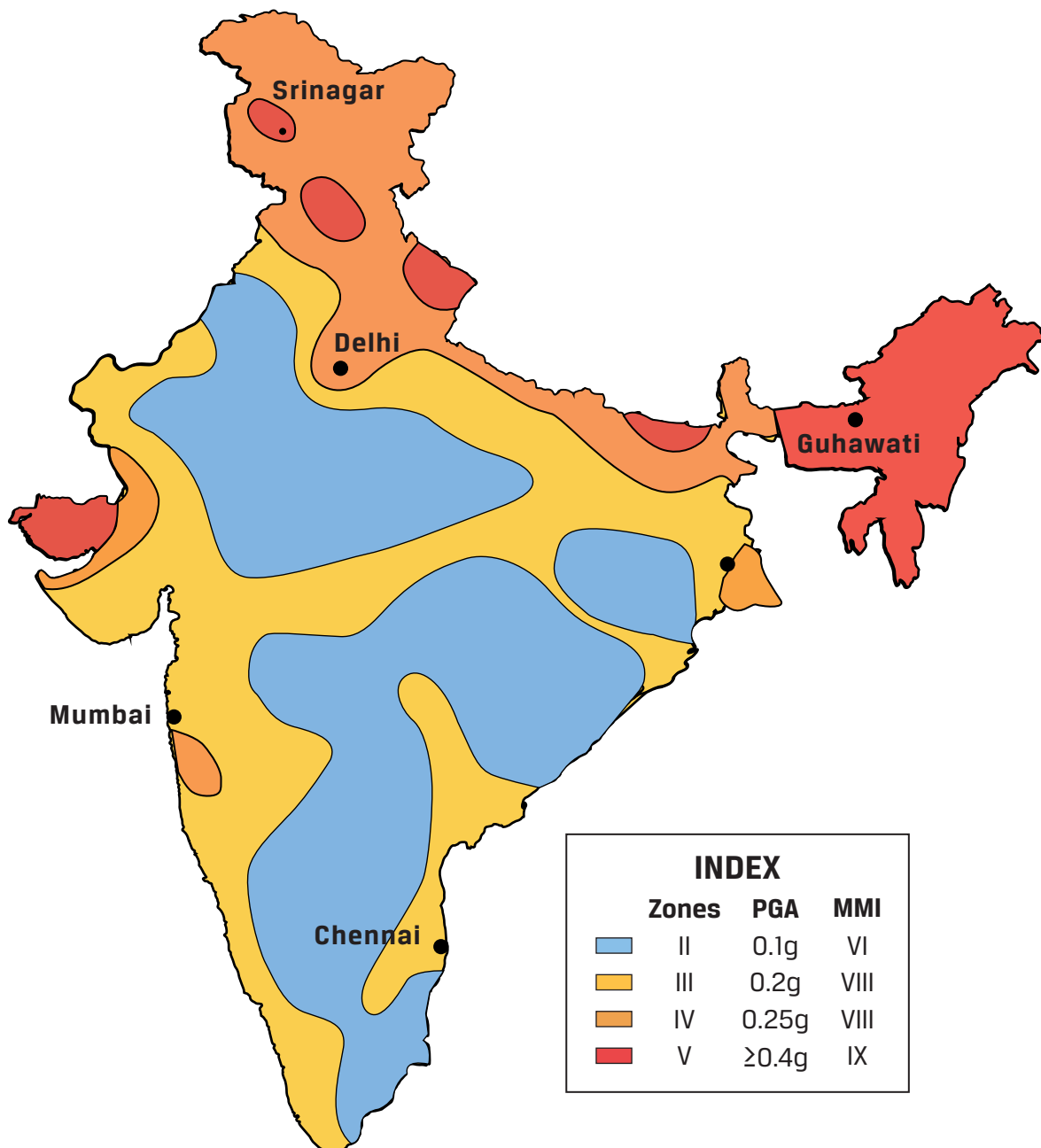
JSW Steel is the only Indian company to be ranked among the top 15 global steel producers by World Steel Dynamics for 13 consecutive years since 2008.

BUILDING AN EARTHQUAKE-RESISTANT INDIA

India has witnessed some devastating earthquakes in the past years. According to reports from the United Nations and World Bank, by 2050, Urban India that includes 200 million, will be threatened by Earthquake. Nearly 54% of the land in India is prone to earthquakes.

The five most earthquake-prone cities in India are- 1) Chennai, 2) Srinagar, 3) Delhi, 4) Guhawati, 5) Mumbai

Thinking ahead of time, JSW has built a product JSW Neosteel EDS that is ideal for earthquake-prone areas in Zones 3,4, and 5 as per the seismic map. The ductility & strength of these bars are appropriate to impart the structures increased earthquake resistance.



JSW NEOSTEEL

JSW Neosteel TMT Bars are one of India's leading TMT brands, known for their high quality and consistency. JSW Neosteel offers peace of mind not only to millions of house builders but also to leading infrastructure and commercial project companies across the world. JSW Neosteel TMT Bars manufactured through a primary production process that ensures purity and superior quality. These TMT Bars are manufactured from Iron ore, with the lowest proportion of sulphur and phosphorous, thus enhancing its strength. The state of the art and technically advanced bar rod mills used for the production of JSW Neosteel are supplied from Danieli, Italy and Morgan, USA.



JSW NEOSTEEL RECEIVES GREENPRO CERTIFICATION



JSW Steel is one of the first steel companies in India to get the GreenPro Ecolabel certification for TMT rebars under the brand name JSW Neosteel.

JGreenPro is a Type - 1 Ecolabel by the Confederation of Indian Industry (CII)- that enables the end-users to choose sustainable products, materials, and technologies. It helps in reducing the environmental impacts during the construction, operation, and maintenance of their buildings and factories.

Product sustainability is at the heart of the JSW group, and the GreenPro Certification of the Neosteel is one of the significant steps that we have taken to disclose the environmental footprint of the product transparently. The perfect balance of strength and ductility in JSW Neosteel TMT bars results in a highly safe design with minimum use of reinforcement and superior environmental benefits during its life cycle.

JSW Steel wants to announce that all the rebar manufacturing facilities of JSW Steel are GreenPro certified. JSW Steel has started its journey on product certification by getting Environmental Product Declarations (EPD) for HRC and CRCA coils.

JSW Steel has always been the front runner in the industry to demonstrate its commitment to sustainable products. JSW Neosteel TMT bars have the highest purity and lowest sulphur and phosphorous content, making them strong.

The High Yield Quenched and Self Tempered (HYQST) technology ensures uniform quality across the bar. In addition to the product sustainability, Green Pro assigns credits to the environment-friendly manufacturing processes, thus recognizing JSW Steel as a sustainable manufacturer. JSW Neosteel rebars qualify as eco-friendly, green, and sustainable products because of their properties and process.

JSW continues to cater to a wide range of customer segments while focussing on building credibility and transparency to our customers and at the same time promoting sustainable steel products through rigorous life cycle studies and eco-labeling initiatives.

JSW provides green product choices to the customers in the construction sector application and green building that helps to build a climate-resilient and low carbon society.



JSW NEOSTEEL EDS BARS

JSW Neosteel EDS TMT bars are Extra Ductile and Super strong. JSW Neosteel EDS bars are Fe 550D grade, hence are stronger than ordinary TMT bars. Special chemistry and post rolling treatment is used to make these bars more ductile, and thus, more flexible than regular TMT bars.

A more ductile, and flexible TMT bar is vital for increased protection of the structure from earthquakes. When a TMT Bar is flexible, it can withstand the shocks of earthquakes much better than an ordinary stiff TMT bar. Higher flexibility allows the TMT bar to bend without breaking at loads, higher than yield strength, but below the tensile strength of the TMT bars. Extra ductility of the JSW Neosteel EDS bars allows them to bend much more without breaking. Thus, offering higher protection to your homes from the shocks of an earthquake.

JSW Neosteel EDS facilitates the construction of homes, apartments, buildings and structures designed for earthquake loads applicable as per the IS codes.



ADVANTAGES OF JSW NEOSTEEL EDS BARS



JSW Neosteel EDS TMT Bars offer six benefits, that will make any structure 6X secure.



High Strength-550D

JSW Neosteel EDS is Fe 550D grade with high strength that provides extra protection in case of powerful earthquake.



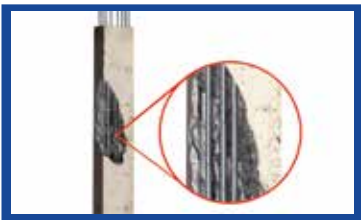
Extra Ductile bars – High Flexibility

Extra ductility and higher elongation of the JSW Neosteel EDS bars allow it to bend much more without breaking under high stress.



Absorbs Higher Earthquake Energy

Higher UTS to YS ratio allows JSW Neosteel EDS bars to absorb higher energy than ordinary bars in case of an earthquake.



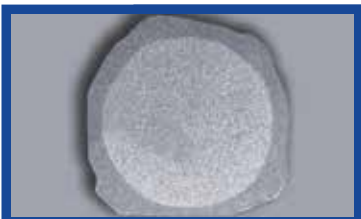
Best Bonding with cement

Unique rib pattern with well-defined ribs that exceed the standard AR value specifications, ensure best bonding with cement.



Highest Purity

Manufactured from iron ore, JSW Neosteel TMT bars have the highest grade of purity and lowest Sulphur and phosphorous content, making it pure & strong.



Consistent Quality

The HYQST technology ensures a uniform quality across the bar. The proof is a perfect ring that can be seen across any cross-section of the bar.

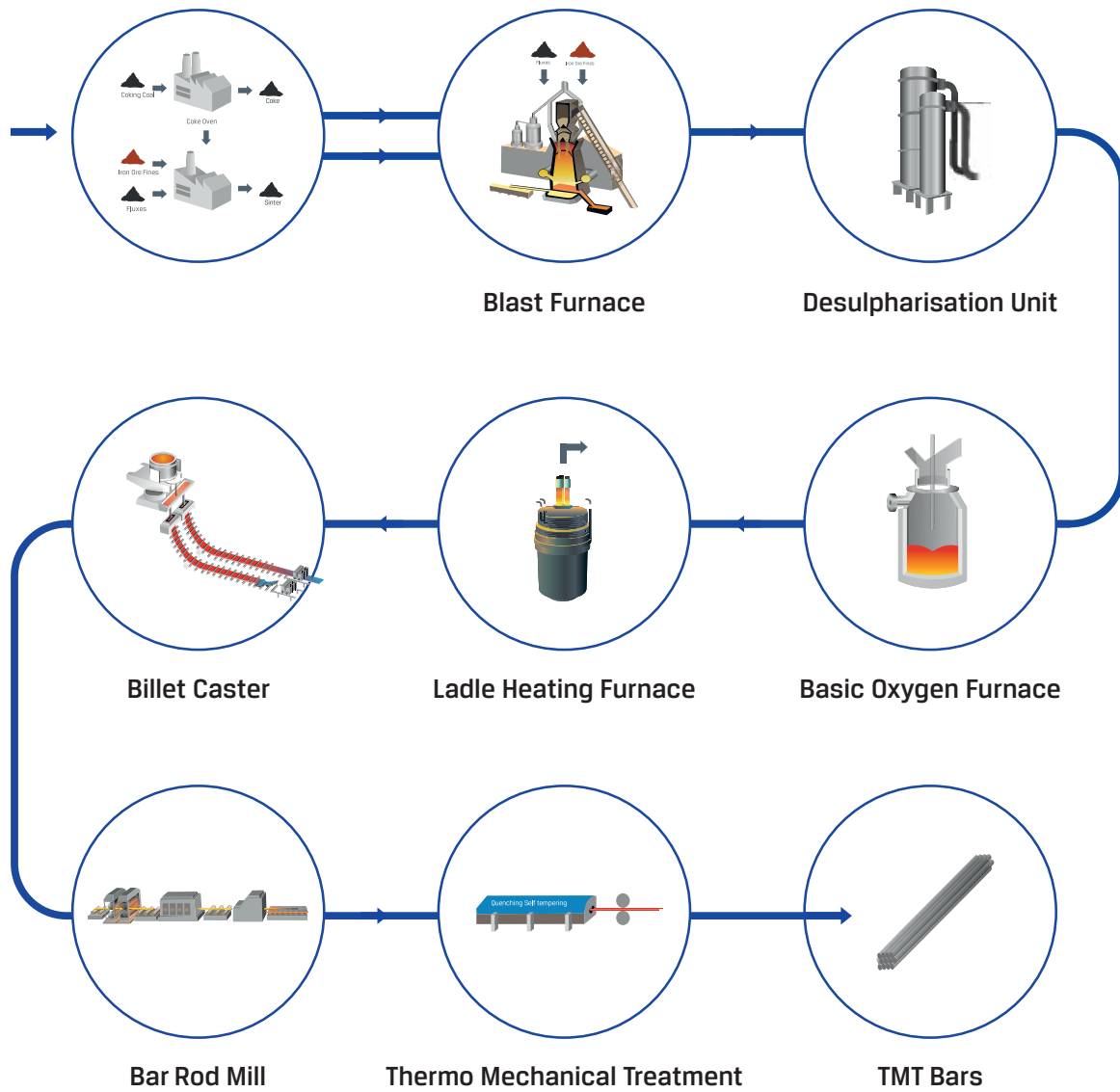
PRODUCT PROPERTIES

Mechanical Properties	IS 1786:2008 for Fe 550D	JSW Neosteel Fe 550D	IS 13920:2016*	JSW Neosteel EDS 550D
YS (Mpa) (Min)	550	570	550	570
UTS (Mpa) (Min)	600	630	600	670
UTS/YS (Min)	1.08	1.12	1.15	1.15-1.18%
%EL (Min)	14.5	16	14.5	16%-18%
Total %EL at Max force	5	7	5	7
Dia (mm)		8-25mm		8-25mm

Chemical Properties	IS 1786:2008 for Fe 550D	JSW Neosteel Fe 550D	IS 13920:2016*	JSW Neosteel EDS 550D
% C (Max)	0.25	0.24	0.25	0.23
% P (Max)	0.04	0.04	0.25	0.03
% S (Max)	0.04	0.04	1.15	0.03
CE (Max)	0.075	0.07	14.5	0.5
% S+P (Max)	0.012	0.012	0.012	0.06
Nitrogen (ppm)	0.61	0.5	0.61	1.00

* Ductile Design & Detailing of Reinforced Concrete Structures subjected to Seismic Forces-Code of Practice

MANUFACTURING PROCESS



BUILD A STRONGER FOUNDATION FOR A RELIABLE HOME WITH JSW NEOSTEEL

JSW Neosteel means pure steel, which signifies strong homes. JSW Neosteel lets you consider aesthetic, economic and environmental factors while building industrialized housings and buildings. Because of which it is the best choice for housing and construction.



JSW NEOSTEEL PROJECTS

Eastern Freeway, Mumbai



Yamuna Expressway



Chhatrapati Shivaji International Airport, Mumbai



Indira Gandhi International Airport, Terminal 3, Delhi



Infosys, Bangaluru



RETAILER NAME & ADDRESS



Corporate Head Office

JSW Steel Ltd.
JSW Centre
Bandra Kurla Complex, Bandra (East), Mumbai - 400 051.
E-mail: jswneosteel@jsw.in

Call Center No: 1800 225 225